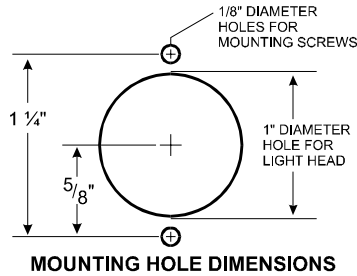


HIDE-A-FLASH STROBE TUBE INSTALLATION SHEET

1. Since the HIDE-A-FLASH strobe light head will share the same reflector as the headlight, brake light, or corner light, make sure the HIDE-A-FLASH strobe tube does not interfere with the proper operation of the currently existing lights.

2. After taking the "Composite" reflector assembly from the vehicle, select a surface in the rear or bottom of the "Composite" housing which is as flat as possible. Cut a 1-inch clearance hole for the HIDE-A-FLASH strobe light into the housing. Use the strobe light head gasket as a template to mark the location of the two mounting screws. Mount as shown in Figure A.



3. After selecting the best location for the strobe power supply (refer to the power supply's instructions), string the 3 conductor cable (figure B) from the power supply location to the remote strobe light head. **NOTE:** The end of the 3 conductor cable with the closed tip terminals (male pins) are to be connected to the strobe power supply, the open ended terminals (female sockets) are to connect to the strobe light head assembly.

Make sure the strobe cable is secure along the chosen cable routing inside the vehicle to prevent it from damage by chafing or stretching. When used to connect strobe lights located in the front of the vehicle, such as headlights, be sure to keep the cable away from engine hot spots.

4. Install the AMP 3 socket housing onto the end of the 3 conductor power cable to be connected to the HIDE-A-FLASH strobe tube. (see figure B). Connect the cable and light first.

5. Install the AMP 3 socket housing onto the end of the 3 conductor power cable to be connected to the strobe power supply (see figure B). Connect this cable to one of the strobe light outlets located on the strobe power supply. Repeat the installation instructions for the other remaining strobe light heads then connect the strobe power supply to the power source as indicated in instructions enclosed with the power supply. Test the system.

NOTE: This testing may be performed before securing the remote strobe light head assembly to the mounting surface of the "Composite" housing assembly.

IMPORTANT WARNING...OBSERVE THE COLOR OF THE WIRES TO BE CONNECTED TO PIN NUMBER POSITIONS as indicated in figure A when connecting the AMP connector housings to the AMP pins and sockets.

IMPORTANT INFORMATION FOR INSTALLATIONS USING SHIELDED CABLE

On the end of the cable at the HIDE-A-FLASH Strobe head, cut the shield flush with the cable jacket. On the other end of the cable, by the power supply, the shield wire is to be grounded to the vehicle chassis to reduce radio or other communication system interference. **ALWAYS KEEP THIS WIRE AS SHORT AS POSSIBLE WHEN GROUNDING.** If this ground shield wire is not to be installed, cut it flush with cable jacket.

FIGURE A - INSTALLATION DIAGRAM

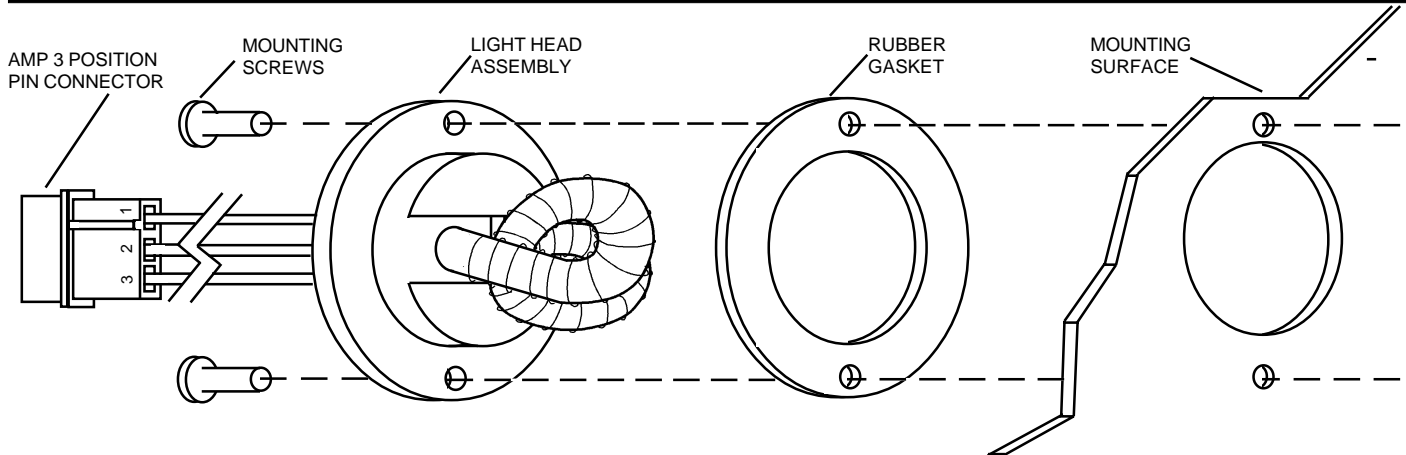


FIGURE B - CONNECTOR INSTALLATION

